

RED EARTH COMMUNITY FOUNDATION

Strategic plan
2022 and beyond



Vision

"Growing an even better Burnett Inland."

Mission

Red Earth exists to invest in people as a vehicle for change for the betterment of the Burnett Inland



Values

- We Care
- We have Courage
- We Collaborate
- We have Commitment

How we operate

- We are open and Inclusive
- We have a legacy mindset
- We build capacity and capability for our region
- We are accountable

Ways to be involved

- **Time** - Volunteering your time and talents to be part of our sub-committees i.e., governance, granting, fund raising or other sub-committees that build an even better Burnett Inland for the future
- **Talent** - Sharing your ideas with other like-minded people about how to respond to the immediate and long term needs and opportunities in our region.
- **Treasure** - Giving some of your treasure (money) today, or working with Red Earth to establish a fund that continues your legacy after you're gone. Red Earth can make your giving impactful through supporting causes important to you.

**‘Never doubt that a small group of thoughtful,
committed citizens can change the world; indeed, it’s
the only thing that ever has’
~ Margaret Mead**

Red Earth Community Foundation

Red Earth Community Foundation (Red Earth) was established by local community leaders in 2013 to support the Burnett Inland region to thrive into its future.

The founders of Red Earth recognised the Burnett Inland, particularly following the millennial drought in the early 2000’s and the 2011 and 2013 floods, needed a vehicle that could harness the pace of change occurring in rural Australia to ensure all our challenges could be kept ahead of and opportunities could be maximised for future generations.

Having begun with a South Burnett focus it has now expanded to include the North Burnett and Cherbourg Aboriginal Council local government areas. These three (3) regions make up the Burnett Inland.

Red Earth exists for its people, and focuses on identifying and harnessing human, financial and other resources to strengthen the capacity of individuals and their networks across the Burnett Inland.

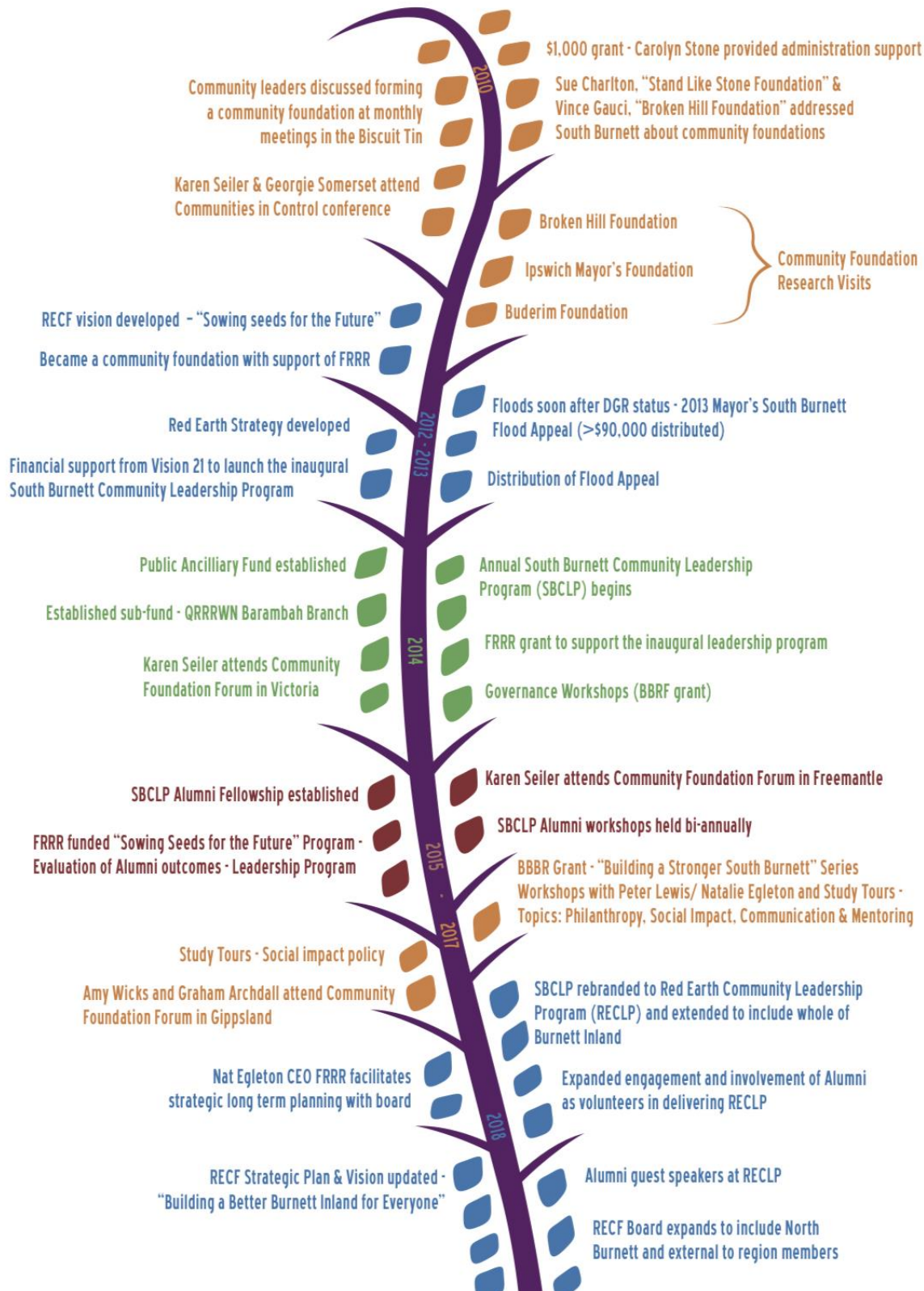
The 2022 strategy has been designed to strengthen our foundations - the backbone structure - that Red Earth makes available to the Burnett Inland. This strategy continues our commitment to be a catalyst for change, investing in local people to strengthen their capacity to create a better future for themselves, their family and their community in ways that will see our region thrive into the future.

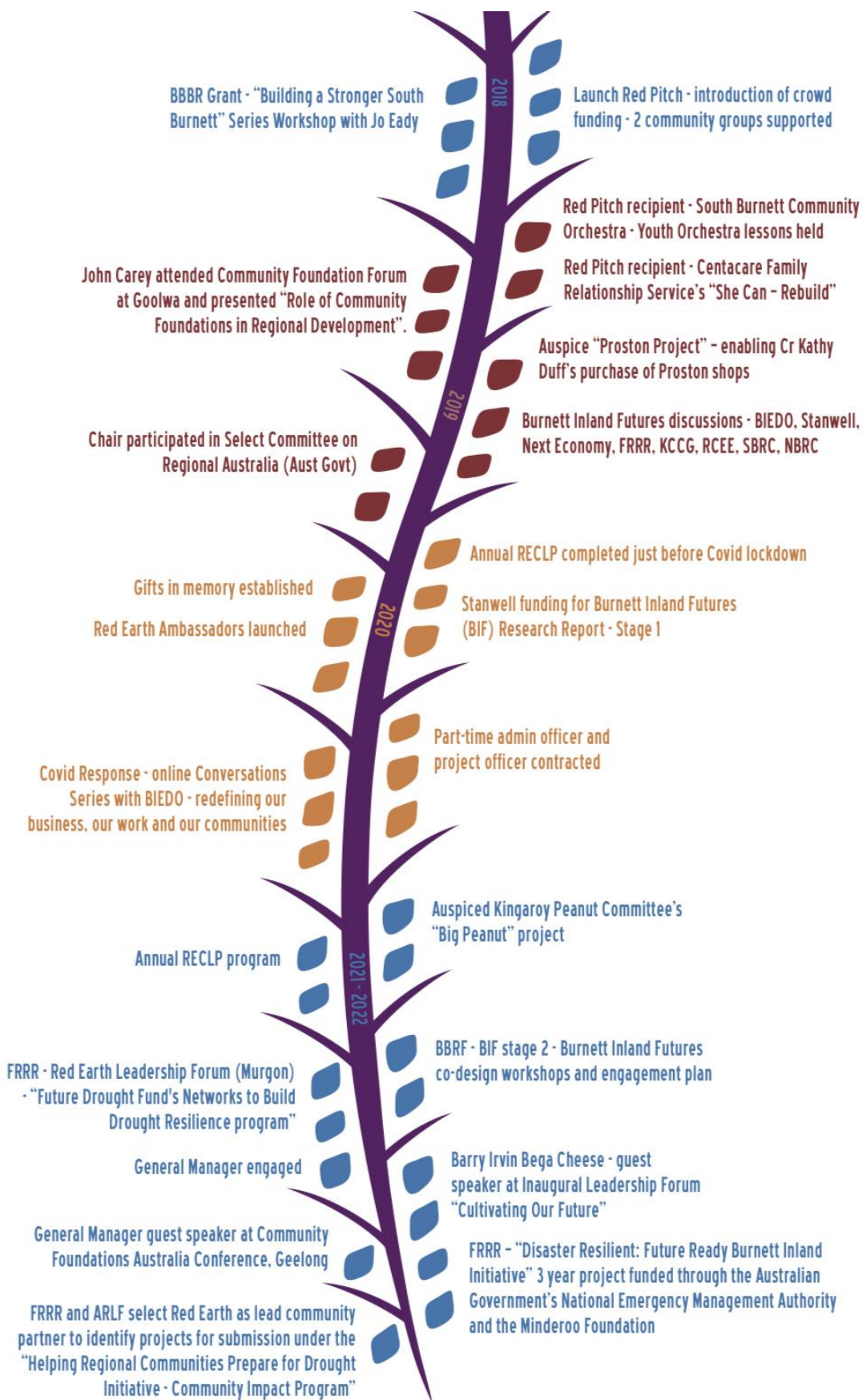
At the heart of everything Red Earth does is the concept of paying it forward, whether that’s coordinating and hosting our annual Community Leadership Program, providing our philanthropic structure to support and distribute over \$90,000 of local fundraising as a result of the Mayor’s Red Earth Flood Appeal, acquiring funding to hold resilience building workshops, or bringing together donors to raise funds to support Burnett Inland initiatives.

Our commitment is to continue providing a backbone structure that enables the practical steps needed to be taken today to build the Burnett Inland that our future generations inherit in 20, 30 and 50 years time.

What have we been up to since 2013

Red Earth's Journey





Red Earth's impact
is not contingent on
any one sector, person,
alumni, business or
organisation, rather it is
dependent on our
ability to unite behind
a shared vision of
'growing an even better
Burnett Inland'

Red Earth Strategy Pillars and aims

Strategy Pillars	Aim
Program & Service development and delivery	<p>Enhance Red Earth's leadership development programs and collaborate with other leadership providers to expand RECLP</p> <p>Increase the participation of diverse groups through developing additional inclusive Red Earth Community Leadership Program (RECLP), including the funding model, that attract youth, First Nations people, CALD and PwD to participate</p> <p>Host an annual Leadership Forum that provides access to thought leadership, updates community on the implementation of our strategy and provides an active connection for RECLP alumni to engage in the BIFs implementation and partnered projects</p> <p>Burnett Inland Futures (BIF) – Implement BIFs recommendations to enable Red Earth to embed itself as the backbone structure that supports the long term viability of the Burnett Inland.</p>
Revenue/Resourcing Development & Distribution	<p>Secure financial sustainability to fund program delivery and resourcing</p> <p>Grow our corpus and financial reserves to adequately resource our vision</p> <p>Establish the legal and financial structures for the Red Earth, and all associated processes to ensure Red Earth is meeting and exceeding all regulatory requirements</p>
Backbone Facilitation	<p>Strengthen Red Earth's governance framework to ensure sustainability</p> <p>Empower future leaders so there is succession planning for directors and key roles around the Red Earth table</p> <p>Invest in skills in our region that enable governance succession planning</p>
Governance & Structure	<p>Ensure Red Earth is trusted by Burnett Inland people to support their legacies and philanthropy</p> <p>Ensure our structure enables accountability and transparency for our community, partners and donors</p>
Marketing Advocacy Promotion	<p>The Burnett Inland is recognised as a thriving region</p>

RECF Board

RECF Directors all bring different skills and expertise to the table, but they share a passionate belief in investing in people as a vehicle for change for the betterment of the Burnett Inland.



Georgie Somerset AM - Chair



John Carey



Carl Rackemann



Fleur Anderson



Belinda Gangemi



Andrew Zerner



Bobby-Leigh Redgard



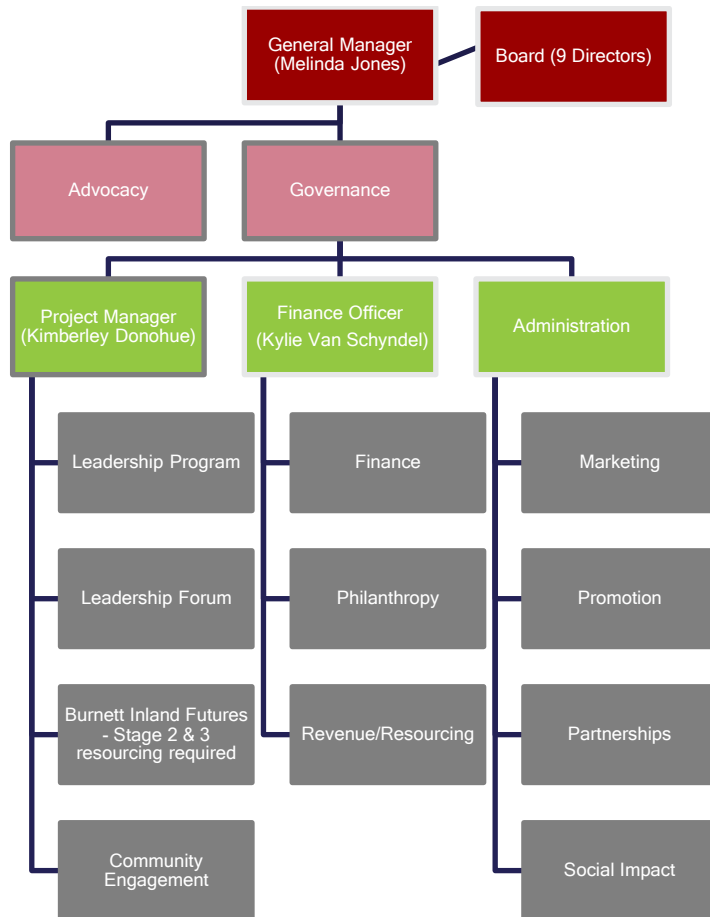
Scott McLennan



Stephanie Whitaker

RECF Team

RECF team consists of leadership program alumni's, including our directors, and we utilise a blend of volunteer and paid services, deliberating seeking to develop capacity within our region.



Melinda Jones
General Manager



Kim Donohue
Project Manager & Admin
Support



Kylie Van Schyndel
Finance Officer



info@redearth.org.au



PO Box 397, Kingaroy Qld 4610



redearth.org.au